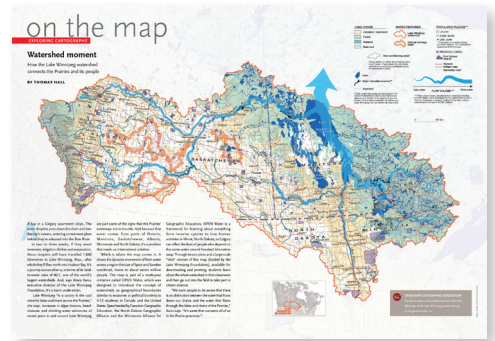


CANADIAN GEOGRAPHIC IN THE CLASSROOM

Article Lake Winnipeg Watershed Map
Issue April 2016



Lake Winnipeg is the world's 10th largest freshwater lake and, since 1976, the world's third largest reservoir. Its watershed is massive, nearly one million square kilometres and includes portions of four American states and four Canadian provinces. Below you will find a list of suggestions on how you might make use of this new and exciting resource.

The Adventures of a Water Drop

Have students in your class find the route that their water takes to Lake Winnipeg and then to Hudson Bay. Once the students discover this route, have them write a children's book describing the challenges that the water drop faces on its journey.

Become an Expert

This map has a lot of detail and its spatial patterns can be used to explain many complex issues facing the water in the Lake Winnipeg Watershed. Have students complete a research project about a Lake Winnipeg Watershed issue they find interesting.

Layering It Up!

Have students find the boundaries to their local watershed. Using stickers, pins or other objects have students add layers to the map like GIS to complete an analysis on any relevant regional topic.

We are all Downstream from Somewhere

Students will analyze the map and pick a populated place upstream from them and find a school there. Find a class in that school that is willing to be part of an online pen pal group. Students can then share a wealth of information such as the history of the watershed, current issues, uses of the watershed, watershed artwork, scientific data collected by the students.

Drainage Types

The Lake Winnipeg Watershed runs through many physical regions of Canada and the United States. Have students identify examples of drainage types (include human made drainages) and the physical region they are found in. Also have students identify areas where humans have altered the natural drainage and discuss the advantages and disadvantages of these human alterations to the watershed.

Living near Water

Students will analyze the map and discuss how water can influence settlement patterns and how it is important to maintain the life in which students have become accustomed. Now have students create a public service announcement to help protect the Lake Winnipeg Watershed.

Get Engaged and Know Your Water

Have students identify their local watershed on the map and participate in a water or shoreline cleanup, a citizen science project or get involved in any other hands-on community project.